

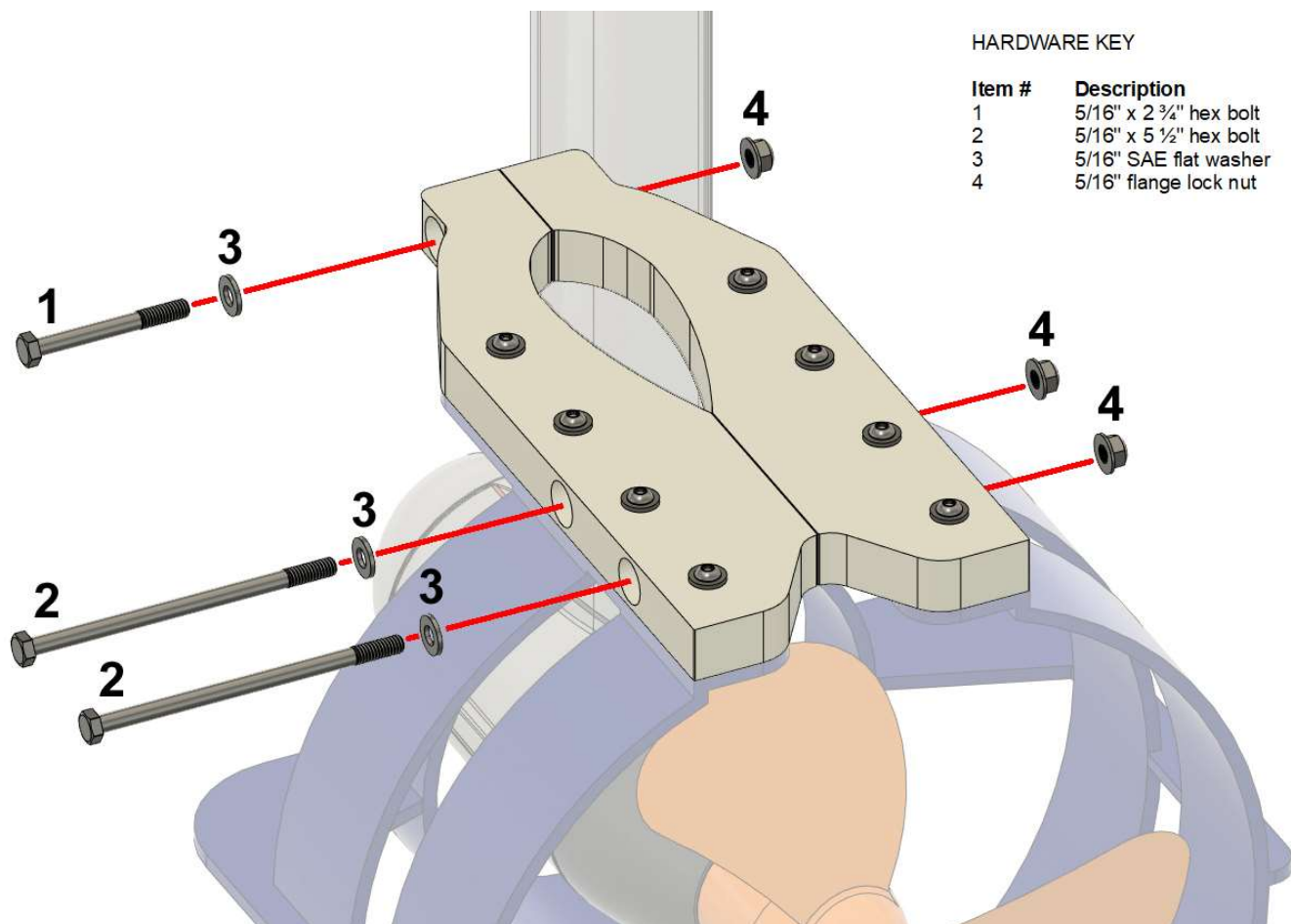
TINYPONTOONBOATS.COM PROP-GUARD KIT INSTALLATION INSTRUCTIONS

FOR TORQEEDO CRUISE 3.0/6.0 & TRAVEL/TRAVEL XP MODELS

Installation of the propeller guard kit for your Torqeedo Cruise 3.0, Cruise 6.0, Travel, or Travel XP electric outboard motor is simple and requires only simple tools. This procedure will require standard sockets, wrenches, a 3/8" drill bit, and an electric drill. Below we have provided a picture of a fully installed kit and diagrams showing where and how to install the included parts and hardware for assembly and installation of your kit.

Please be aware that drilling the 3/8" base-fin hole (last diagram provided) may void your factory outboard motor warranty. This hole is required for proper and full-strength installation.



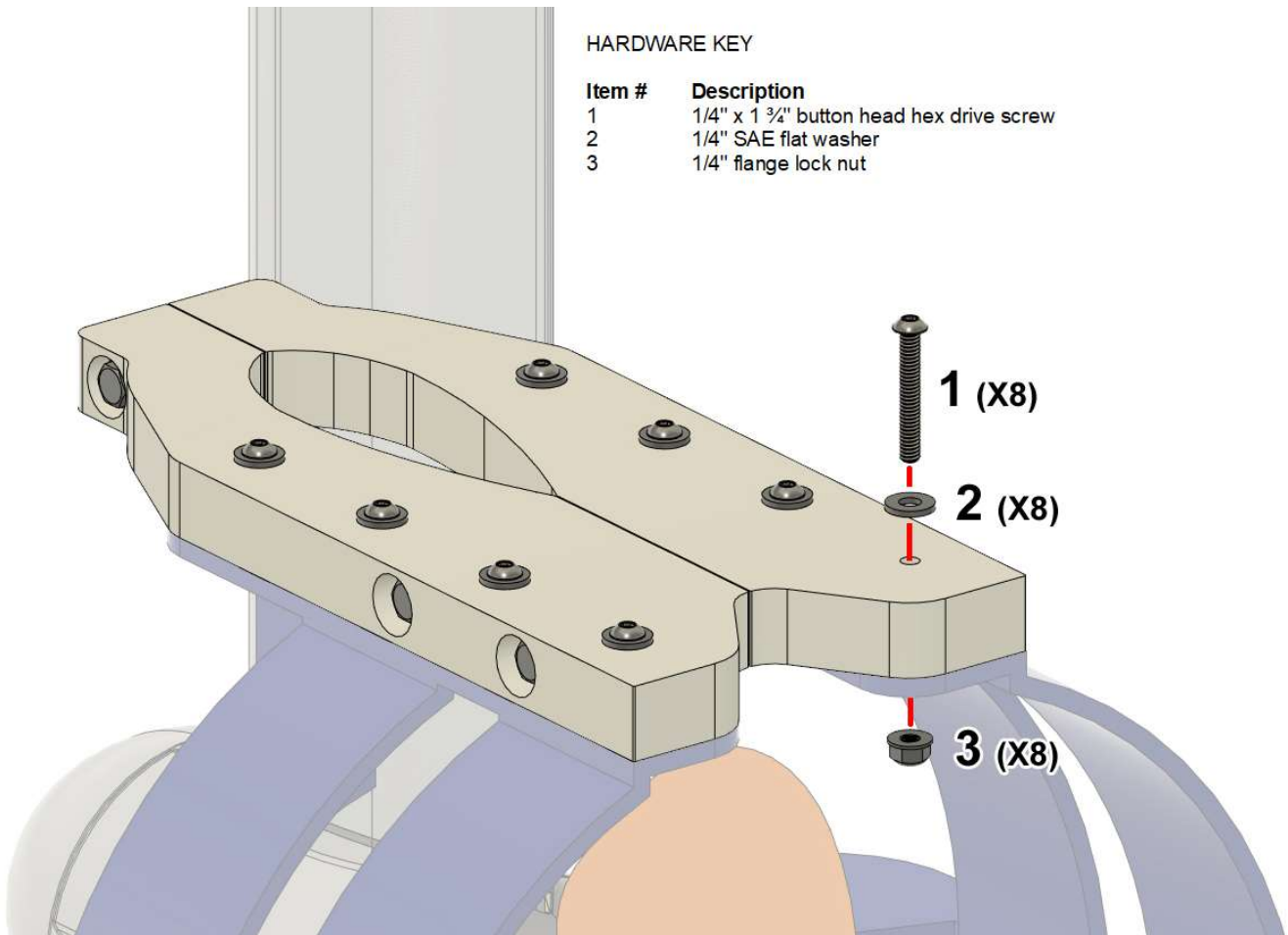


HARDWARE KEY

Item #	Description
1	5/16" x 2 3/4" hex bolt
2	5/16" x 5 1/2" hex bolt
3	5/16" SAE flat washer
4	5/16" flange lock nut

HARDWARE KEY

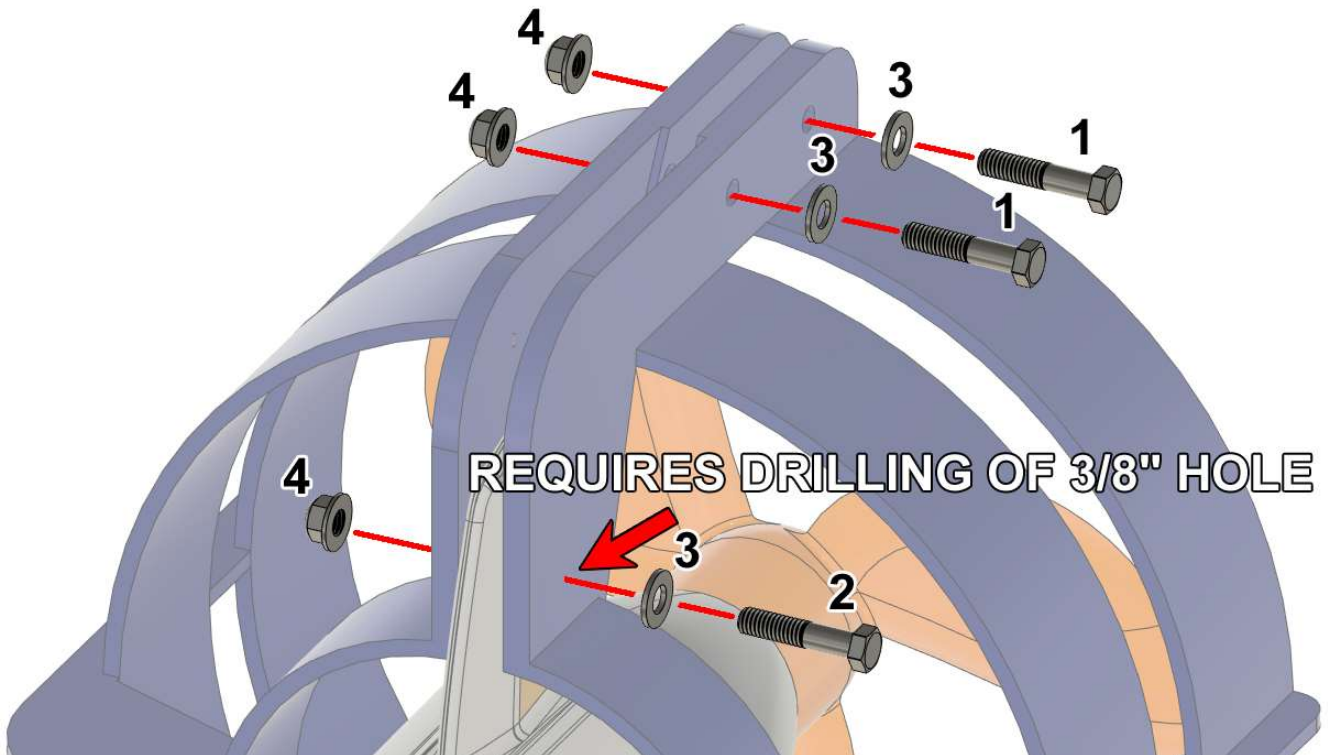
Item #	Description
1	1/4" x 1 3/4" button head hex drive screw
2	1/4" SAE flat washer
3	1/4" flange lock nut



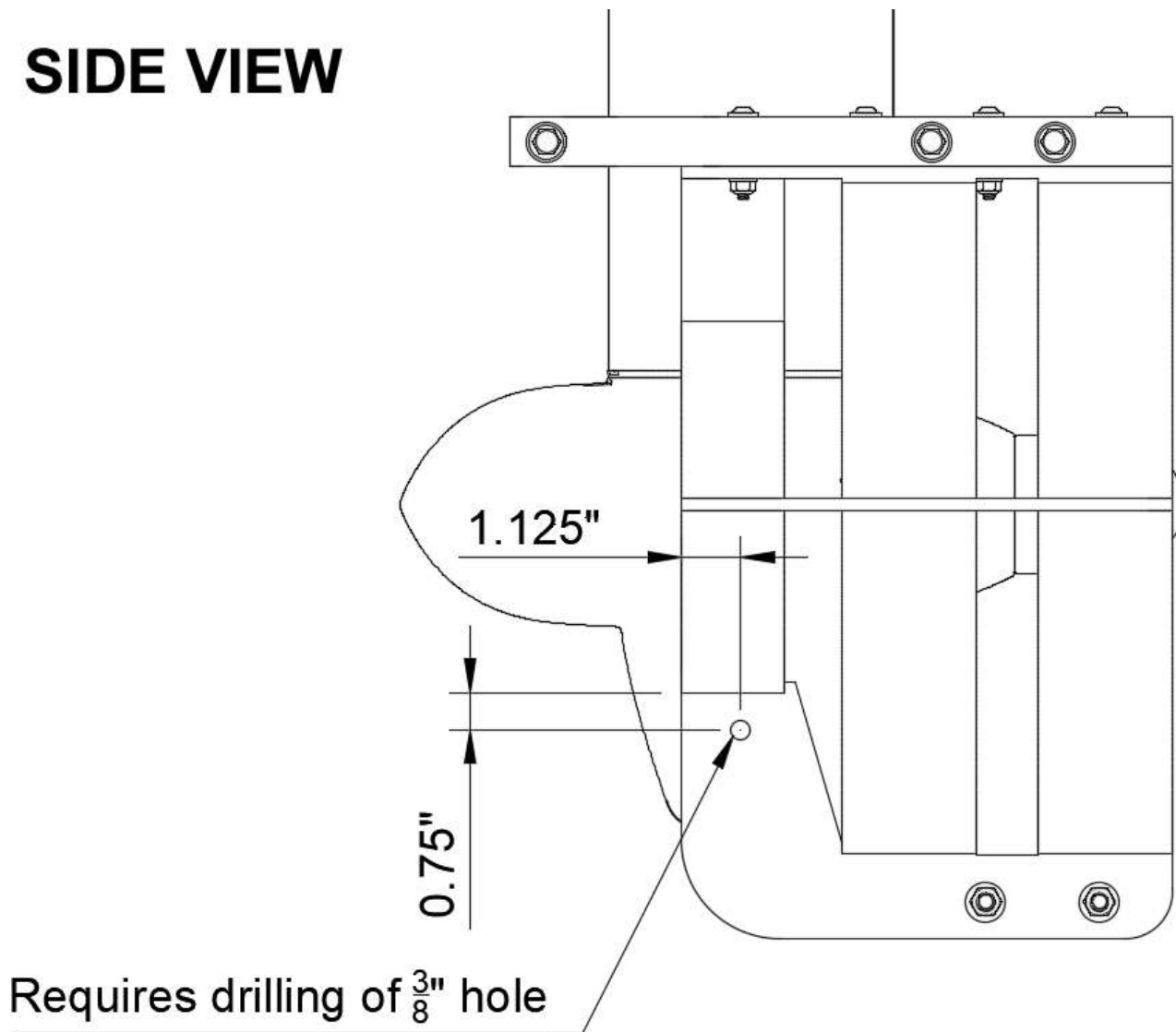
ASSEMBLY SHOWN INVERTED

HARDWARE KEY

Item #	Description
1	3/8" x 1 3/4" hex bolt
2	3/8" x 1 3/4" or 2" hex bolt (application specific)
3	3/8" SAE flat washer
4	3/8" flange lock nut



SIDE VIEW



If questions arise during the installation of this kit, please call Tiny Pontoon Boats at 603-630-5658.